

The data below was derived from a number of different sources, including the 2006 Behavioral Health Service System Mapping Survey. Please note that more information from this survey can be found in the Access section of this report. A list of survey respondents can be found in the Appendix.

Children and Adolescents: Face to Face Services

SERVICE	# RESPONDENTS	# RESPONDENTS
	2006	2005
Outpatient Screening	11	16
Outpatient Assessment	13	19
Individual Therapy	17	21
Group Therapy	8	13
Family Therapy	16	22
Medication Services	3	6
Pharmacy Services	2	3
Outpatient Substance Abuse Treatment	4	6
Case Management	6	11
Non-Traditional (See Breakout)	4	5
Crisis Respite/Observation	3	4
Psychiatric Emergency	1	3

Non-Traditional Services Offered for youths

- Wraparound
- Home/Community Based Counseling
- Ancillary Services and Supports

Thirteen providers reported community prevention/education services for children (2005: 11)

- Skills training
- School based prevention/intervention
- Parent education
- Suicide prevention/education
- Family wellness
- Support groups
- Discharge planning
- Anger management
- Abuse Prevention Education
- Community Information and Outreach

Average Wait Time for New Appointments by Service: Children

Children: Average Wait Time For New Appointments

Service	Year	No Wait	1 day- 2 weeks	2 weeks- 2 months	3-6 months	6+ months
Screening	2006	2	4	2		
	2005	2	5	4		
Assessment	2006	1	7	1		
	2005	1	8	8		
Individual Therapy	2006	2	6	3	1	1
	2005	3	11	8		0
Group Therapy	2006	2	1	1		
	2005	1	3	3		
Family Therapy	2006	2	5	1	1	1
	2005	3	11	7		0
Medication Service	2006	0	0	2		
	2005	0	0	3		
Substance Abuse*	2006	1	2	0		
	2005	1	2	1		
Case Management	2006	1	1			
	2005	3	2			
Crisis Respite/Observation	2006	1	2			
	2005	2	0	1		

*Refers to outpatient substance abuse treatment/rehabilitation. No detoxification services reported as available.

Most school based indicators (AISD web site—other area school districts not analyzed) remained fairly stable in our community between 2005 and 2006.

School Attendance

- 2004-2005: 94.3% (State: 95.7%)
- 2003-2004: 94.4% (State: 95.7%)

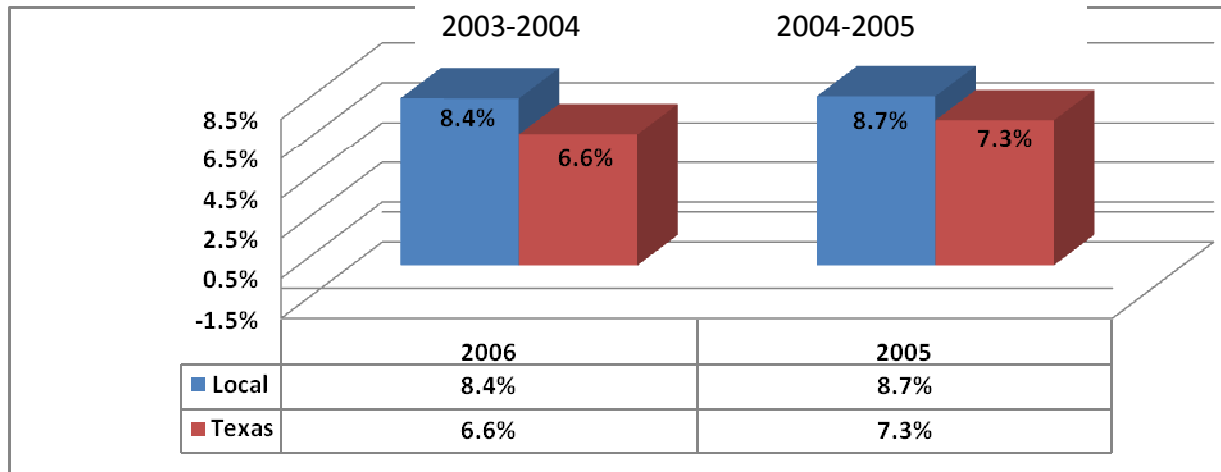
Alternative Education Placements

- 2004-2005: 2% (State: 2.3%)
- 2003-2004: 2% (State: 2.4%)

Annual # of Children per 1,000 under legal responsibility of DFPS (point of prevalence)

- 2006: 8.4 youths per 1,000 (State: 6.6)
- 2005: 8.7 youths per 1,000 (State: 7.3)

Annual # of Children per 1,000 Under Legal Responsibility of DFPS (point of prevalence)



There was an increase in overall allegations of abuse and neglect, but population growth was not accounted for in that data.

Confirmed Allegations of Abuse/Neglect

- 2006: 1543
- 2005: 1294

Chart 11: Confirmed Allegations of Abuse/Neglect*
(Source: Texas Department of Family and Protective Services)

